

## WP1 – Raintight Cover for Inlets and Outlets

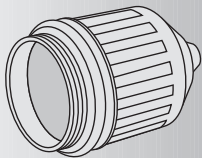
Marinco WP1 specification-grade cover is suitable for wet locations when closed. WP1 protects all Marinco 15A and 20A straight blade and 15A locking flanged inlets and outlets from moisture and dust.



Ideal for “power-in” and “power take-off” panels on industrial vehicles or machinery. Sturdy spring-load design seals the lid’s neoprene gasket against cover’s body.

Standard color is black (WP1), with gray (WP1GY) and yellow (WP1YL) available.

For fast OEM installation, Marinco also offers its inlets and outlets assembled onto the WP1 cover. The minimum for this OEM option is 1,000 annual units. Completed assemblies are shipped in bulk cartons of 50 count. Part number example: 5278WP.OEM (15A straight blade flanged inlet, assembled inside a WP1).



## 1520BI.OEM Weatherproof Cover

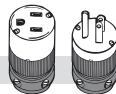
The 1520BI weatherproof cover features a triple series of raised ribs on a soft, slightly-compressible PVC body to create a highly water-resistant connection when plugged into inlets that are installed into Marinco’s WP1 raintight cover. The 1520BI.OEM fits all Marinco 15A and 20A straight blade and 15A locking connectors. Standard color: yellow.

*Available only in .OEM packaging – bulk-packed 50 per carton.*

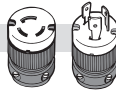
## 15RA Adapter Compatibility

*15RA Right-Angle Adapter with Cord Grip fits these devices:*

15 & 20 Amp Straight Blade



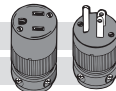
15 Amp Locking



All Black Devices

15 & 20 Amp Straight Blade

15 Amp Locking

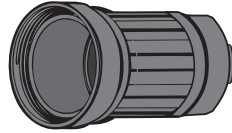


See pages 34 & 35 for right-angle devices and adapters.



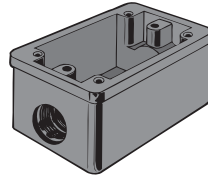
## 6017 Weather-Resistant Cover

For 15A plugs (male).



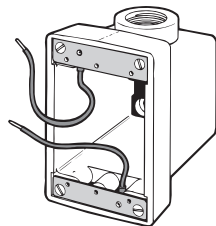
## 6018 Weather-Resistant Cover

For 15A connectors (female).



## 6080 – FS Box

Black non-metallic, with **two 3/4" K.O. holes**. Will accept all 15A, 20A and 30A receptacles and 7420CRS and 7423CRS covers.



## 6083CR – FD Box

Yellow fiberglass, with **two 3/4" K.O. holes**. Will accept all 15A, 20A, 30A and 50A receptacles and 7420CRS, 7788CRS and 7423CRS covers.

## 6084CR – FD Box

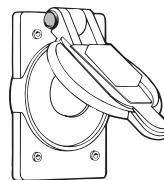
Yellow fiberglass, with **two 1" K.O. holes**. Will accept all 15A, 20A, 30A and 50A receptacles and 7420CRS, 7788CRS and 7423CRS covers.

## 6085 – PVC Adapter

**3/4" pipe thread**, for use with 6083CR and 6080 boxes. *(not illustrated)*

## 6086 – PVC Adapter

**1" pipe thread**, for use with 6084CR. *(not illustrated)*



## 7423CRS Weather-Resistant Cover

Yellow Lexan® with flip lid. Fits 15/20A single receptacles and 15A locking receptacles. *Also available in .OEM packaging.*



## 9000 – Circuit Tester

**15A 125V Straight Blade**. A safe way to check for correct polarity.



## 93101 – Receptacle Cover Plate

Dual, stainless steel.